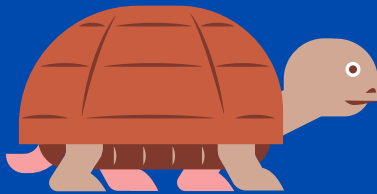


GOVERNMENT



Slower pace

PACE OF WORK

Work in public institutions at city, county, state, and federal levels. Government careers offer opportunities to shape policies, directly influence practices, and serve communities.

DEFINITION

Commonly free to pose questions and methods within frameworks of larger initiatives or key priority areas.



AUTONOMY OF IDEAS

Data/research analyst, data scientist, policy advisor, policy analyst, legislative analyst/advisor, program analyst, program manager.

ROLE/POSITIONS

Typically roles are for generalists, but can be specialist or subject matter expert (SME) at higher levels.



SME V METHODOLOGIST

Compensation ranges but much less flexible/room for negotiation.

Typical benefits: Public service loan forgiveness, job security, good health insurance, 401K, and retirement benefits.

SALARY & BENEFITS



Agency executive teams, legislature or politicians, policy makers and program stakeholders, and the general public.

AUDIENCE



Police departments, courts, district or state attorney offices, public defenders, sheriff's office, probation agency, state or federal legislature, regulatory agencies, and federal agencies (e.g., National Institute of Justice).

EXAMPLE COMPANIES